



HARVARD UNDERGRADUATE

CBE

Harvard Undergraduate Consulting on Business & the Environment

2024 Impact Report





External Impact

Through high impact casework, charitable donations, community service, and targeted grant programs, CBE made significant impact to Boston and beyond this year.



Our Impact Through Cases

At CBE, our cases **make a difference.**

Our largest cases this year drove significant systemic change, delivering targeted recommendations that aimed to advance critical matters such as environmental sustainability and gender equality across a variety of high-impact sectors.



Daniel Kim

S25 Director of Operations

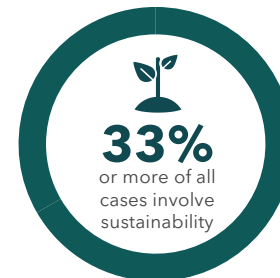
“

One of my cases **focused on gender equity in the cybersecurity space** for a financial firm, and it was a very high-impact case to tackle, especially because there hasn't really been a lot done in that realm previously. We were able to analyze case studies and conduct high-level interviews addressing the existing gender gap in the cybersecurity space. That knowledge was then used to create crucial **recommendations that would continue to uplift women in the workforce.** For everyone on the team, **it was a very meaningful project** as we would be able to see the effects of our contribution and efforts in the future, whether that's in one or five years.

”

Pro Bono Cases

At CBE, our pro bono work reflects our **commitment to driving meaningful change in the world.** By dedicating over 3,000 consulting hours annually to nonprofit organizations and social impact initiatives, we provide guidance that **amplifies the reach of mission-driven organizations** tackling critical challenges.



Donations 2024, by Impact Area

Harvard CBE donates significant revenue to support our mission of creating positive, enduring change in our community. 2024 has been a year of tremendous growth, and CBE is proud to present our contributions to impact.

Our Approach To Impact

Harvard CBE was founded with the vision that impact and community matter.

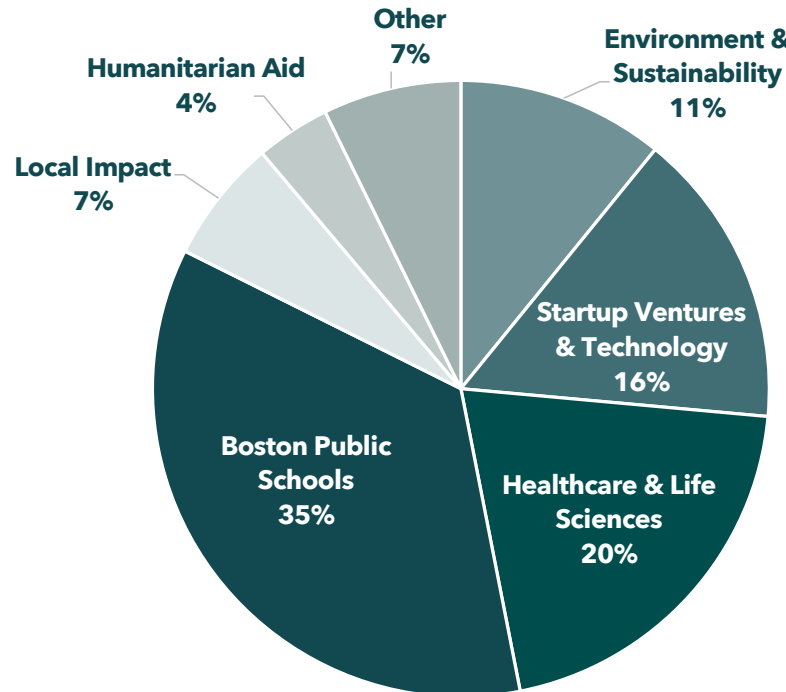
We strive to make an enduring, positive impact on our local community and the wider world while building an organization that attracts and develops diverse student talent.

This year, we donated

\$100,000+

in unrestricted charitable donations, ventures, and sustainability grants.

2024 CBE Donations by Impact Area



Donations 2024, by the Numbers

Beyond our commitments to general impact areas and pillars, Harvard CBE also has specific partnerships and programs that have become a staple of our annual operations.



Our Donations

\$30,000

For our **Arda Cataltepe Award** recipients, a semesterly award given to CBE members who have demonstrated selflessness, dedication to the organization, and positive impact.

\$18,000

Awarded to ventures in our annual **CBE ventures competition**, providing non-dilutive, equity-free funding to student founded start ups connected to Harvard.

\$38,000

In our annual **Boston Public Schools System Scholarship**, a need-based scholarship awarded to 10 local Boston high school students.

\$15,000

Provided in **sustainability grants** for Harvard students seeking to make a sustainable change in their communities.

\$5,000

For our **MCAT and LSAT prep book giveaway** within the Harvard community to support future leaders in medicine and law.

\$40,000+

Total annual donation towards both the **Dana Farber Jimmy Fund** and the **Massachusetts General Hospital Cancer Center**.

Donation Spotlight: The Arda Cataltepe Award

The Arda Cataltepe Award is a semesterly tradition of CBE, serving to honor Arda's legacy and impact on both CBE and the wider community for as long as CBE continues into the future.



Since its inception, the Arda Award has already given **25+ charities and organizations over \$50,000 in donations**, selected by exemplary members of the CBE community in fulfillment of the organization's strong mission of giving back to the larger community.

The Arda Award was founded in Fall 2022 after the passing of former CBE President Arda Cataltepe '23. Through this award, we recognize members of CBE who have demonstrated selflessness, shown dedication above and beyond to the organization, and have positively impacted those around them – **characteristics that Arda displayed day in and day out at CBE.**

Each semester, five exceptional CBE members are awarded this prize, and with it, the ability to **donate \$2,000 of CBE's money each to a charity of their choice**, with CBE additionally donating **\$2,500 each to the Jimmy Fund and MGH Cancer Center** in Arda's honor. An additional \$18,000 is given to both charities annually – a nod to the 18 championships won by Arda's favorite basketball team: the Celtics.

Grants and Scholarships

Through sustained initiatives such as the BPS Scholarship, Sustainability Grant, Ventures competition, and the new ESG Fellowship, CBE continues to support impact-focused innovators to create positive change.

Launched in Fall 2022, the Boston Public Schools (BPS) Scholarship demonstrates CBE's **sustained commitment to local educational advancement**.

The program initially offered **\$30,000 in need-based scholarships** to ten exceptional high school students and has since expanded **to provide over \$35,000 annually** to local graduating seniors pursuing higher education.

This initiative specifically targets low-income and underrepresented students across the Boston area.

Selection criteria emphasize financial need while recognizing students who **exhibit strong leadership qualities, moral character, and personal integrity**.

Our CBE Sustainability Grant empowers local innovators to **turn their environmental protection and sustainability ideas into reality**.

Launched in 2018, the program **currently allocates \$15,000** in grant funding **to support local nonprofits, research initiatives, and student groups** actively advancing environmental sustainability goals.

Recipients are each selected for their commitment to **executing high-impact sustainability projects in the coming year**.

This strategic funding initiative demonstrates CBE's **dedication to fostering environmental conservation** through grassroots support by **empowering young organizations and emerging leaders** in the sustainability sector.

IMPACT METRICS

\$35k+

in scholarship funds annually

10

winners per year

PAST WINNERS



Dombelfarms
Feeding our world



HumanNeeds
PROJECT



Community Service in 2024



Harvard CBE is dedicated to giving back through meaningful community service, organizing numerous volunteering events to create positive, lasting change in the Greater Boston area, and CBE is proud to serve our community.



Jordan Chan, S25 Managing Director

“Although HUCBE is a professional consulting organization, our members also participate in community initiatives beyond our casework. Volunteering in our community is about more than just the organizations we benefit – it is about incorporating **a deeper purpose into all of the work** we do.”

In Numbers

400+ hours

Of direct community service by CBE in 2024

Backing Sustainability

Harvard CBE hosts a semesterly **Sustainability Day** to support environmental stewardship. In Spring 2024, members cleaned the **Mystic River Watershed** by removing debris, clearing invasive plants, and helping restore natural habitats to improve the area's environmental health. In Fall 2024, we partnered with **Tree Boston** to maintain Noyes Playground, assisting with mulching, weeding, and watering trees.

Fighting Hunger

As part of our community initiatives, Harvard CBE partnered with the Harvard University Dining Services **Heat-N-Eats Program** and the **Friday Night Supper Program** to combat food insecurity. CBE members packaged surplus meals at Annenberg dining hall for local shelters and served three-course dinners to individuals in need through FNSP, fostering community impact and reducing food waste.

Building Hope

Harvard CBE also partnered with **Cradles to Crayons** to package essentials like clothing and school supplies for children in need. Other members joined **Habitat for Humanity** to build a multi-family home, assisting with insulation and construction. These initiatives highlight CBE's dedication to addressing housing and material insecurity while giving back to the community.



Internal Impact

CBE made a tremendous impact on its own members this year through financial aid, professional development opportunities, fellowship positions, and engagement inside and outside of the case team.



Financial Aid in 2024



Harvard CBE expanded its generous financial aid program for students involved in the club in 2024, providing a supplemental grant to support the work-study contribution for students enrolled in Harvard on financial aid.

Impact

Purpose

CBE maintains a **commitment to diversity and equity** in opportunity by ensuring students with a work-study contribution can commit to CBE's pre-professional activities without extensive financial stress.

Process

All **active CBE members on Harvard's financial aid** are eligible to apply to the CBE Financial Aid program at the start of every semester. The CBE **Alumni Council decides on the awards** for each applicant independently, **ensuring nonbiased confidentiality**.

Member Testimonials

"CBE's financial aid program has been great! It's **allowed me to focus on CBE and academics instead of working** to make ends meet."

"**Big thank you, the Fin Aid program makes it possible for me to do something preprofessional** instead of working at [redacted campus job] where I would be spending hours to get money but not really develop the skills I need."

In Numbers

More than

\$160,000

Awarded in financial aid grants in 2024



Approximately

40%

CBE members received some form of grant support

Professional Development

One crucial way CBE impacts its members internally is through our extensive professional development opportunities that provide our members with the network, skills, and confidence to pursue their professional endeavors.

Workshops & Specialized Training

CBE offers our members workshops on topics such as Consulting & Finance 101, how to case prep, and Life Science-specific industry training. In these workshops, we bring in knowledgeable alumni, upperclassmen, and topic specialists to provide our members with **high quality, industry-relevant lessons**.

Opportunity Publicity & Company Engagement

Our Director of Prof Dev regularly publicizes relevant job listings across all of our pillar industries and pre-professional sectors such as law and medicine. We also host company-specific panels and info sessions **exclusively for our membership**.

Upperclassmen & Alumni Mentorship

CBE Board and other upperclassmen provide several rounds of coffee chats to our membership, sharing fresh insight on recruiting and success at Harvard. Many alumni also generously offer their time to help CBE **members learn and grow pre-professionally in a one-on-one setting**.



Stella Gilbert, S25 President -> BCG Chicago

“CBE has provided me with **access to career pathways I never would've known to explore**, combining my passion for sustainability with pragmatic analytical skills. I owe the beginnings of my career to CBE's upperclassman mentorship, alumni connections, prof dev workshops, and on-the-job skill development – all of which have **empowered me** to be where I am today.”



Jackie Chen, S25 Director of Prof Dev -> Bain Boston

“One of the reasons I joined CBE 5 semesters ago was to not only develop **consulting-specific experience**, but also soft skills of **confidence in corporate settings**. I've met incredible, insightful people through all facets of CBE – from study breaks to sourcing calls. They've instilled so much support in me as I navigate the **next steps of my professional journey**.”

Community Engagement



Harvard CBE takes pride in extensive community development programming, ensuring all members feel connected and participate in sibling families, affinity groups and study breaks within smaller pockets of the larger organization.

Programming

Sibfams

Members are **divided randomly into smaller groups** each led by a board member to participate in bonding activities, dinners, and mentorship – and compete as teams in CBE competitions.

Affinity Groups

Members who **identify with certain affinity designations** such as Women, FGLI, LGBTQ+, Latinx, and Black have designated budget to plan meals and mentorship events within their groups.

Study Breaks & Dinners

Every week, CBE hosts both a **community dhal dinner** and an **organization-wide study break**, offering food catered from local restaurants for the community to come together and enjoy.

Member Testimonials

"As an international FGLI student who is also South Asian, I love that **CBE allows me to interact with all 3 parts of my identity** and form stronger bonds with these identity groups I belong with."

"A major highlight of CBE experiences have been the entertainment / food excursions with sibfams, which ends up **developing long-lasting bonds** between the tight-knit groups."

In Numbers

Approximately

\$22,000

allocated by CBE in 2024



On programming for

25+

semesterly sibfams and affinity groups

CBE's Extracurriculars

Outside of the case team, CBE has a tremendous impact on our members and local and global communities through our supplemental initiatives. These are treated as extracurriculars for members to opt in as interested.



CBE Blog

Web publication sharing business insights & CBE anecdotes



CBE Casebook

Prof dev initiative creating a custom casebook for consulting recruiting



Greenfund

Sustainable fund managing our ESG-focused investment strategy



LS Symposium

Intensive day of career and service oriented around the life sciences



LS Think Tanks

Supplemental teams conducting in-depth research on LS topics



Sourcing Team

Members drafting project scopes & signing future clients in-semester



Sustainability Supplemental Case

Extra case team working pro-bono for a sustainability nonprofit



Sustainability Grants

Team allocating \$15k in grants to sustainable nonprofits & local groups



Sustainability Industry Reports

Supplemental teams conducting in-depth research on sustainability trends



Ventures Competition

Team co-hosting largest Harvard startup competition (\$25k in grants)



New Initiative Spotlight: The ESG Fellowship



2024 marked the launch of CBE's annual ESG fellowship, a program awarding almost \$2,000 in grants to two CBE members who dedicate 10-15 hours per week in January to support ESG-related projects at nonprofit organizations.



Ashley Ding
S25 Associate

Ashley is one of CBE's inaugural ESG fellows. Here, she reflects on her fellowship experience.



Could you give us an overview of the mission of the company where you interned, and why you chose it?

Central Florida Jobs With Justice's (CFJwJ) mission to empower working communities resonates with me, especially its focus on **climate justice and uplifting energy-burdened individuals**. Growing up in Orlando, I've seen the compounded struggles of low-income families facing rising energy costs and inadequate protections during increasingly frequent and intensifying hurricanes.

Please explain a bit about the research you conducted at Central Florida Jobs With Justice.

I contributed to CFJwJ's PAUSE Act initiative, which aims to **protect vulnerable households** by implementing safeguards during extreme weather and public health emergencies, including halting utility disconnections for nonpayment when the heat index is forecasted to reach 90°F or higher. I organized research on the Act's economic, disaster resilience, extreme heat, health disparities, and violence prevention impacts into structured dockets for meetings with elected officials.

I also researched **Texas's clean energy transition**, highlighting the use of Disaster Recovery Funds to drive job creation, workforce development, and the economic advantages of renewable energy as a framework for how CFJwJ can structure Florida's program.

Some great work! Did you produce any deliverables?

Yes, I compiled a report highlighting the **economic importance of language justice** in Florida, emphasizing how multilingual emergency communications during disasters can reduce economic losses, protect industries like agriculture and housing, and improve disaster preparedness and recovery for the state's diverse population.

I included data and sources impacts on vulnerable populations like farmworkers and non-English-speaking households, while highlighting examples of effective language access programs in other states.

2024 has marked another year of growth and impact for CBE. If you are a Harvard/CBE alumnus, company, or community partner interested in further involvement with any of our initiatives, please contact president@hucbe.org.

